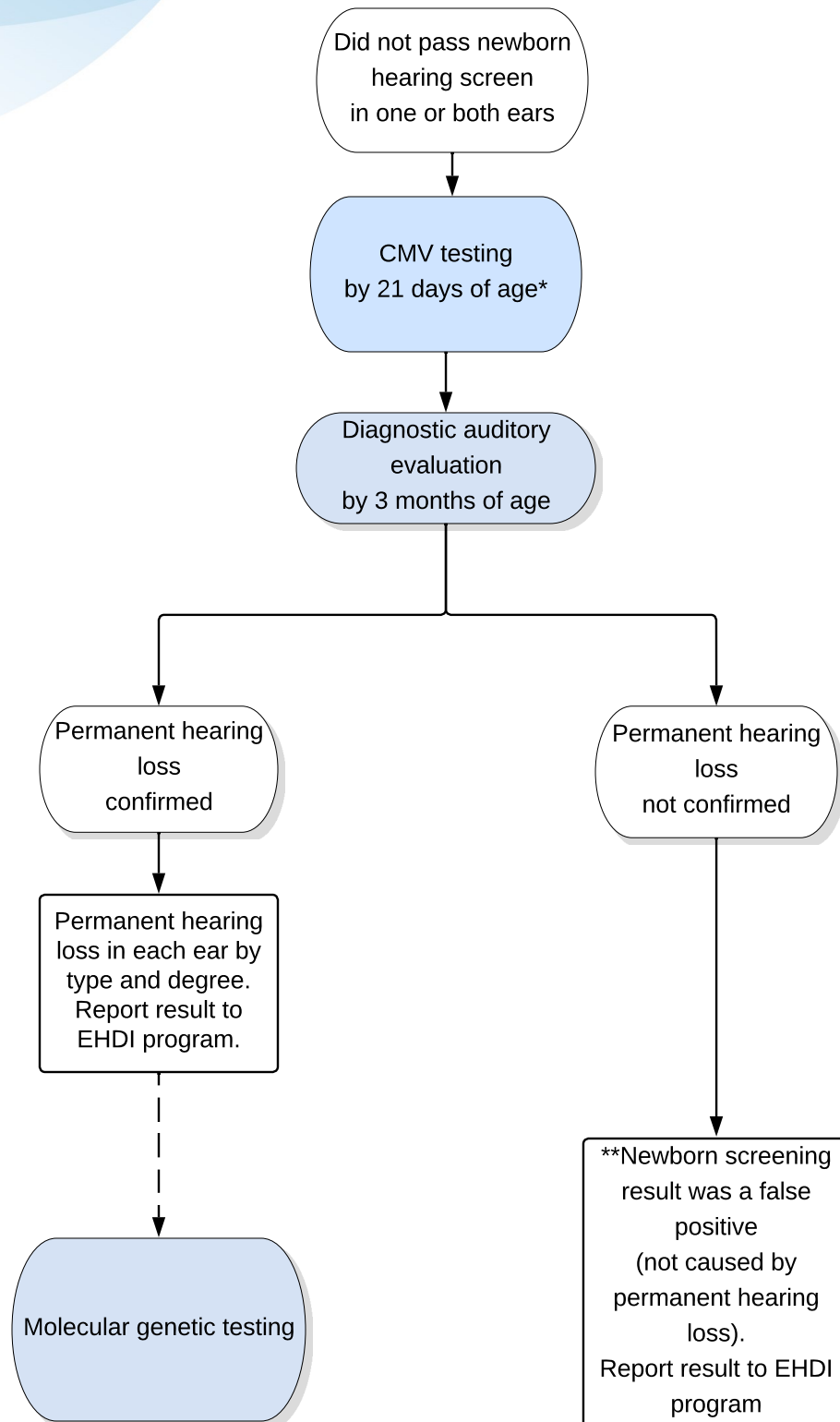


Hearing Loss



Key

- Actions are shown in shaded ovals; results are in the unshaded ovals.
- Diagnostic outcomes are shown in boxes.
- Dashed line reflects testing that is strongly advised.
- * CMV testing by PCR from saliva sample.
- **Out of range newborn screening without permanent hearing loss may require regular follow-up.

Abbreviations

CMV = Cytomegalovirus

EHDI = Early Hearing and Detection Intervention Newborn Screening Program